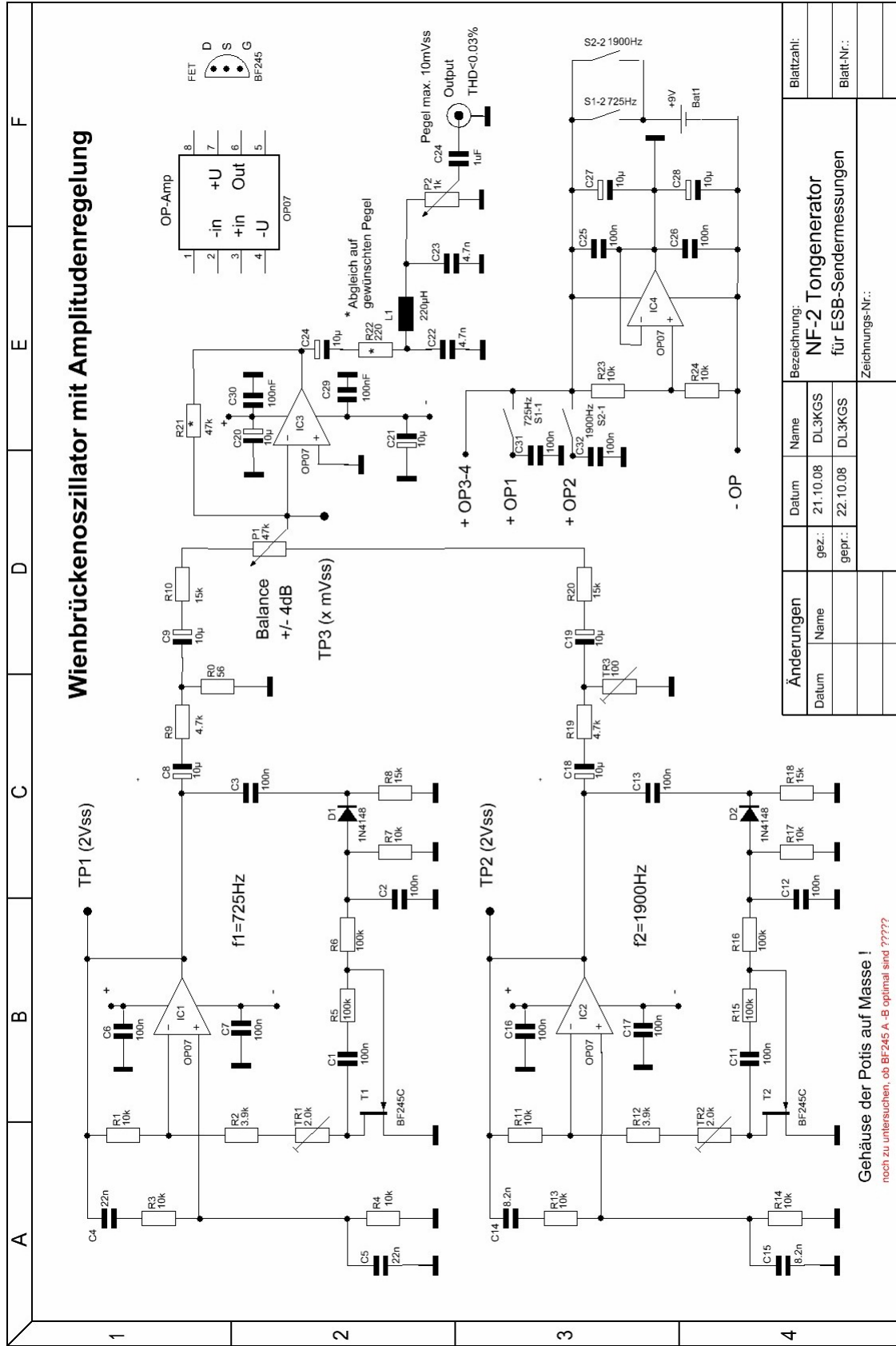


NF 2 Tongenerator 725Kz und 1900 Hz

November 2008

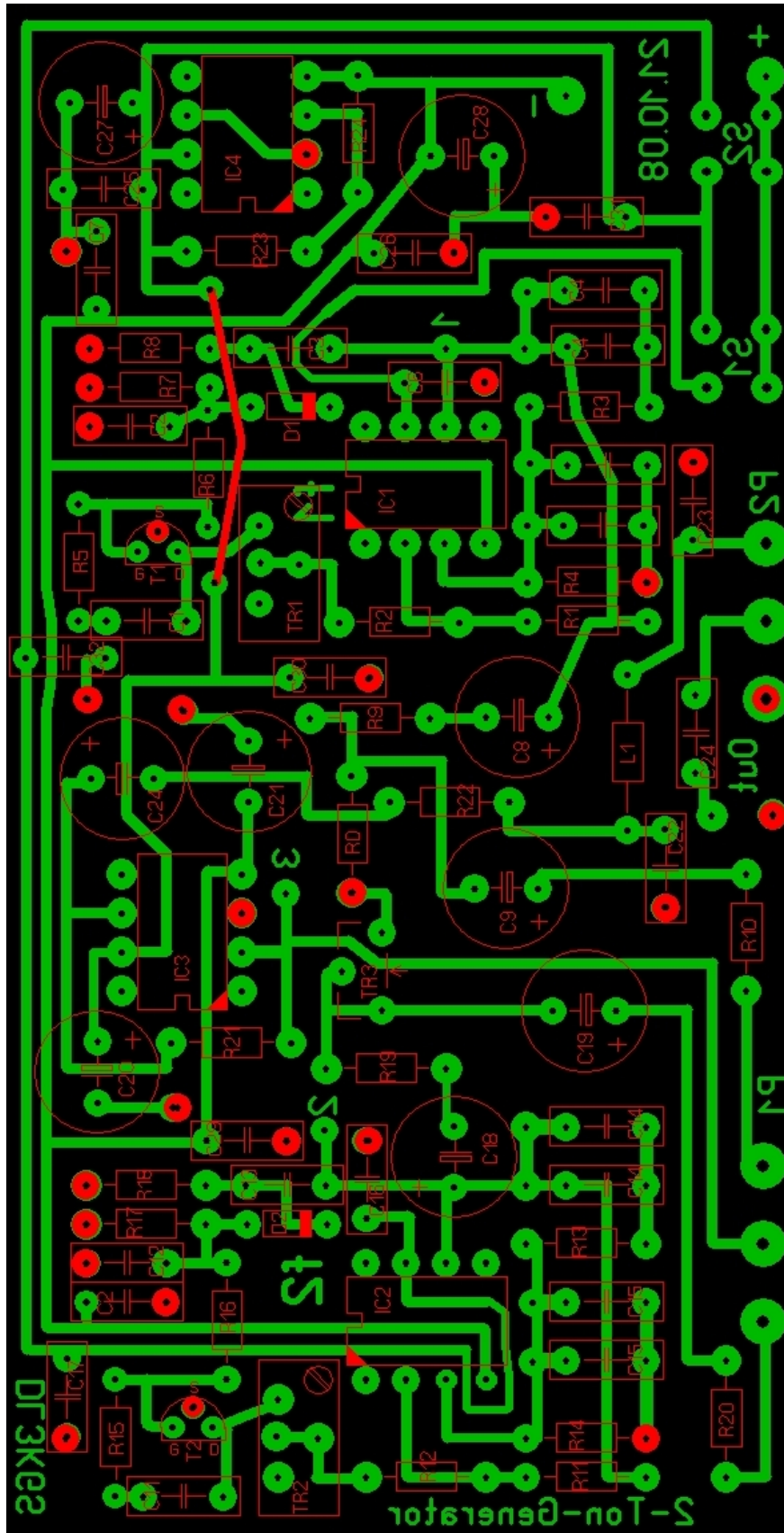
Schaltplan



Stückliste

Bat1	= +9V	R0	= 56
C1	= 100n	R1	= 10k
C2	= 100n	R2	= 3.9k
C3	= 100n	R3	= 10k
C4	= 22n	R4	= 10k
C5	= 22n	R5	= 100k
C6	= 100n	R6	= 100k
C7	= 100n	R7	= 10k
C8	= 10 μ	R8	= 15k
C9	= 10 μ	R9	= 4.7k
C11	= 100n	R10	= 15k
C12	= 100n	R11	= 10k
C13	= 100n	R12	= 3.9k
C14	= 8.2n	R13	= 10k
C15	= 8.2n	R14	= 10k
C16	= 100n	R15	= 100k
C17	= 100n	R16	= 100k
C18	= 10 μ	R17	= 10k
C19	= 10 μ	R18	= 15k
C20	= 10 μ	R19	= 4.7k
C21	= 10 μ	R20	= 15k
C22	= 4.7n	R21	= 47k
C23	= 4.7n	R22	= 220
C24	= 10 μ	R23	= 10k
C24	= 1 μ F	R24	= 10k
C25	= 100n	S1-1	= 725Hz
C26	= 100n	S1-2	= 725Hz
C27	= 10 μ	S2-1	= 1900Hz
C28	= 10 μ	S2-2	= 1900Hz
C29	= 100nF	T1	= BF245C
C30	= 100nF	T2	= BF245C
C31	= 100n	TR1	= 2.0k
C32	= 100n	TR2	= 2.0k
D1	= 1N4148	TR3	= 100
D2	= 1N4148		
IC1	= OP07		
IC2	= OP07		
IC3	= OP07		
IC4	= OP07		
L1	= 220 μ H		
Output	= Cynch-Buchse		
P1	= 47k Linear		
P2	= 1k Linear		

Bestückungsplan



Layout

