

Messdetektor mit AD 8307

Stückliste

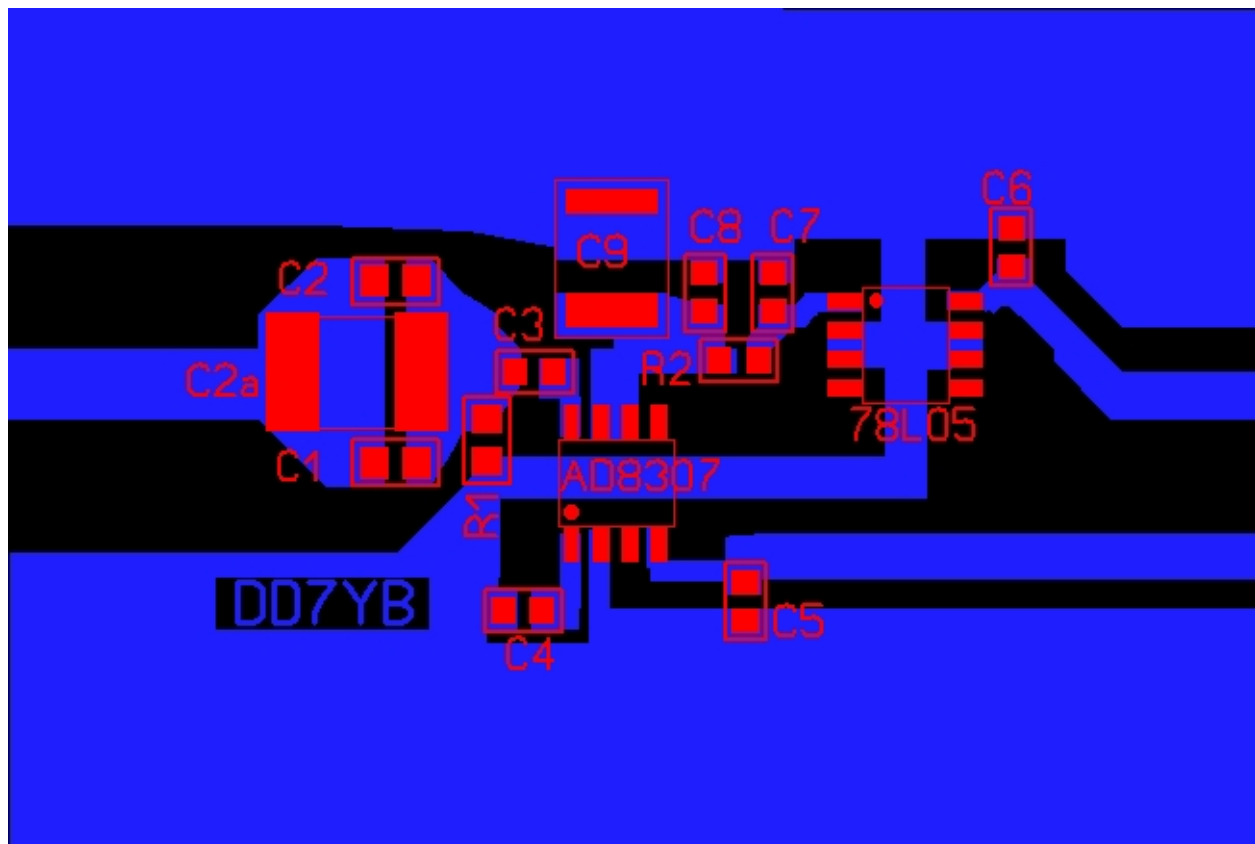
BNC1 = BNC-Stecker oder Buchse
Gehäuse = Firma Schubert 12 / 37 * 55 * 30 mm

C1 = 100n SMD 0805
C2 = 1n SMD 0805
C2a = 1u SMD 5 * 6 mm Bipolar
C3 = 100n SMD 0805
C4 = 100n SMD 0805
C5 = 100n SMD 0805
C6 = 100n SMD 0805
C7 = 100n SMD 0805
C8 = 1n SMD 0805
C9 = 10µ SMD Elko 8 * 5 mm

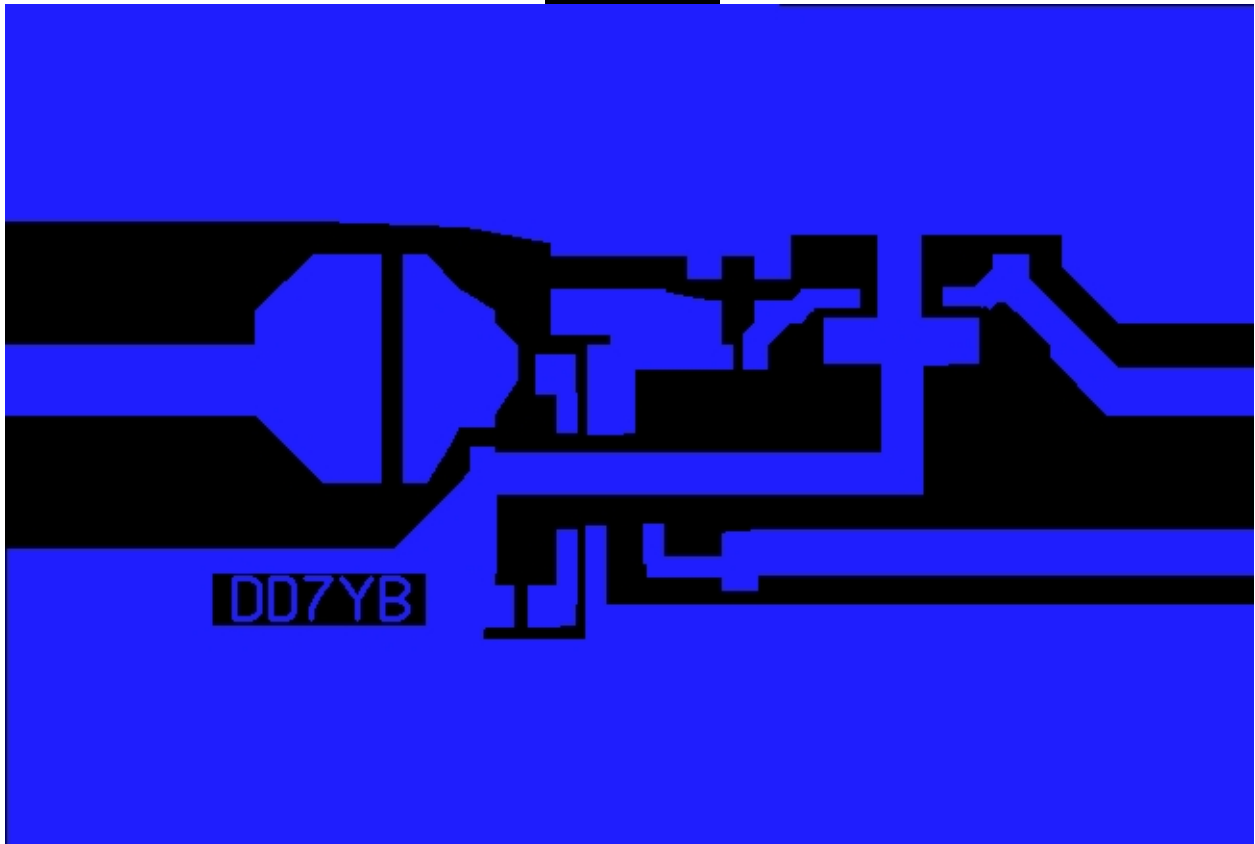
IC1 = AD 7803 SMD SO-8
IC2 = 78L05 SMD SO-8

R1 = 52,3 (51,0)Ohm SMD 0805
R2 = 10 Ohm SMD 0805

Bestückungsplan



Layout



© DD7YB